

LITME


莱特美智能纤维

烟台经纬智能科技有限公司
Yantai Jewe I-tech Co., Ltd.

地址: 山东省烟台经济技术开发区黑龙江路10号
Add: No.10, Heilongjiang Road, ETDA Yantai, Shandong, China
Tel: +86 535 6955022 6955029

LITME

莱特美智能纤维

 烟台经纬智能科技有限公司
Yantai Jewe I-tech Co., Ltd.

CONTENT

- 01 / 企业简介
Enterprise Profile
- 03 / 产品介绍
Product Introduction
- 04 / 应用领域
Application Area
- 15 / 创新发展
Innovative Development

科技编织未来
SCI-TECH WEAVES FUTURE



企业简介 Enterprise Profile

烟台经纬智能科技有限公司是全球首家智能发光纤维生产企业，主要从事导电纤维、发光纤维、变色纤维、纤维锂电池和纤维太阳能电池等各类智能纤维的研发、制造与销售。

母公司烟台泰和新材料股份有限公司成立于 1987 年，专业从事高性能纤维研发、生产及销售，业务横跨高性能纤维、特种纸、精细化工、先进复合材料等多个产业领域，于 2008 年在深交所上市 (002254)。

Yantai Jewe I-tech Co., Ltd. is the first intelligent luminous fiber manufacturer in the world. We focus on the R & D, manufacturing and marketing of intelligent fiber materials, such as conductive fibers, luminous fibers, photochromic fiber, fiber lithium battery and fiber solar cell etc.

The parent company Yantai Tayho Advanced Materials Co., Ltd., is one of the world's leading manufacturers of high performance fiber and related products including spandex, aramids, specialty paper, fine chemicals, advanced composites and more. The company was listed on Shenzhen Stock Exchange (Code 002254) in 2008.



公司与复旦大学合作建设智能纤维材料联合实验室，长期从事新型纤维电子器件的理论与技术应用研究，致力于解决医学、电子、国防等重要领域的难题。研究成果 2 次被 SCIENCE、5 次被 NATURE、11 次被 NATURE 子刊以 " 研究亮点 " 专题报道。研究中心先后获得国家重点研发计划、国家自然科学基金、上海市科委重点项目等省部级以上项目十余项，获得国家自然科学二等奖一次。

The Fiber Electronics Research Center of Jewe I-tech and Fudan University is engaged in the study and research of theories and applications of novel fiber electronic devices, which are expected to solve key problems in medicine, electronics and national defense. The research achievements have been highlighted with 2 times by Science, 5 times by Nature, 11 times by other Nature series journals. The center has undertaken more than 10 key projects such as National Program on Key Basic Research Project, Key Program of the National Natural Science Foundation, Shanghai Key Basic Research Project, and was awarded with Second National Prize of Natural Science.

LITME (莱特美) 纤维介绍

莱特美是全球首创智能纤维，具有发光、能量存储、能量捕获及传感等功能。世界范围内首次实现可编织发光纤维的生产制备。超柔性发光纤维和高强度发光纤维可为不同行业提供全新解决方案。

LITME is one kind of intelligent fiber, with the functions of light-emitting, energy storage, energy harvest and sensing etc. It is the first brand of the woven light-emitting fibers in the world. Both ultra-soft luminous fiber and HT luminous fiber provide new solutions to different industries.

	LITME 发光纤维	LED 灯带	OF 光导纤维	EL 塑料冷光线
特征	发光均匀、柔和、色彩丰富、低功耗、无热辐射、百米级发光长度、低功耗 (<0.02 瓦/米)、线径小(0.2 mm)、柔性好、可机器编织、缝纫、绣花。	发光不连续、硬质、高功耗 (约 2 W/米)、发热明显、直径粗 (厘米级)、无法编织。	硬质、柔性差；需要辅助光源；首尾亮度差异明显；弯折耐受性和稳定性差，编织弯折点易引起导光失效。	线径较粗 (通常大于 1 mm)、柔性差、难以编织。
纤维形态	长单丝 Filament Yarn			
纤维直径	0.2—0.5mm (300D—2000D)			
发光颜色	红、绿、蓝、粉、紫 Red, Green, Blue, Pink, Purple			
织造方式	横机针织、剑杆梭织、编织、布线、缝纫、刺绣			
安全测试	满足多种可穿戴产品安全标准和规范			
使用温度	-30°C—150°C			



产品性能 Performance



亮度均匀
Uniform



可拉伸
Elastic



柔性
Soft



色彩丰富
Colorful



可水洗
washable

应用领域

Application Area

▶▶ 汽车工业 | Automotive Industry

汽车 LOGO、内饰缝线、座椅缝线、车内氛围灯、安全带、星空顶、阳光帘。前仪表台摆件、装饰毯、脚垫等汽车美容装饰产品。

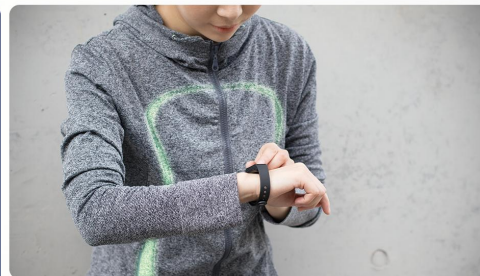
Automotive logo, interior sewing thread, seat sewing thread, safety belt, prospective interior mood lighting products, the decorative blanket at front dashboard, car curtain and foot pad.





▶▶ 智能服饰 | Smart Textile

运动发光服装、童装、鞋帽、高端定制发光礼服和婚纱、演出服装、户外装备、防护服装、制服 LOGO 和警示标识等。
Sport luminescent clothes, children's wear, shoes and hats, high-grade custom dress and wedding dress, stage clothes, outdoor clothes and protective apparel, logo and warning marks on uniform.

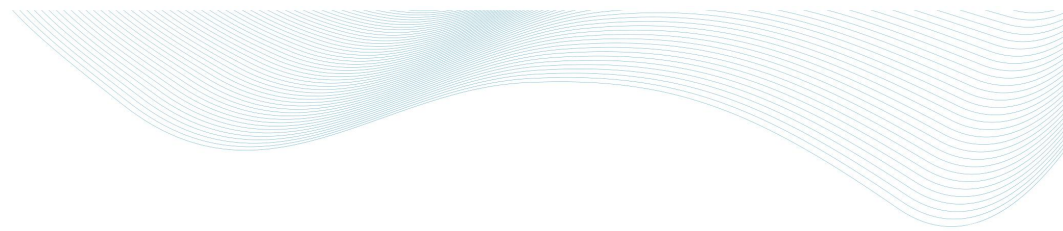


▶▶ 信息电子 | Informatics & Electronics

耳机线、充电线、手表带、手机外壳、手机背板、音箱外层、装饰、电器面料显示板等,以及各类电器装饰品。

Earphone cable, charging cable, watchband, mobile shell, mobile phone backboard, loudspeaker box decoration, display board and decoration on electric appliance.

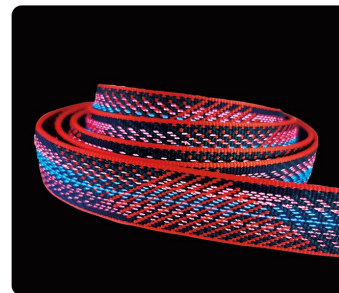


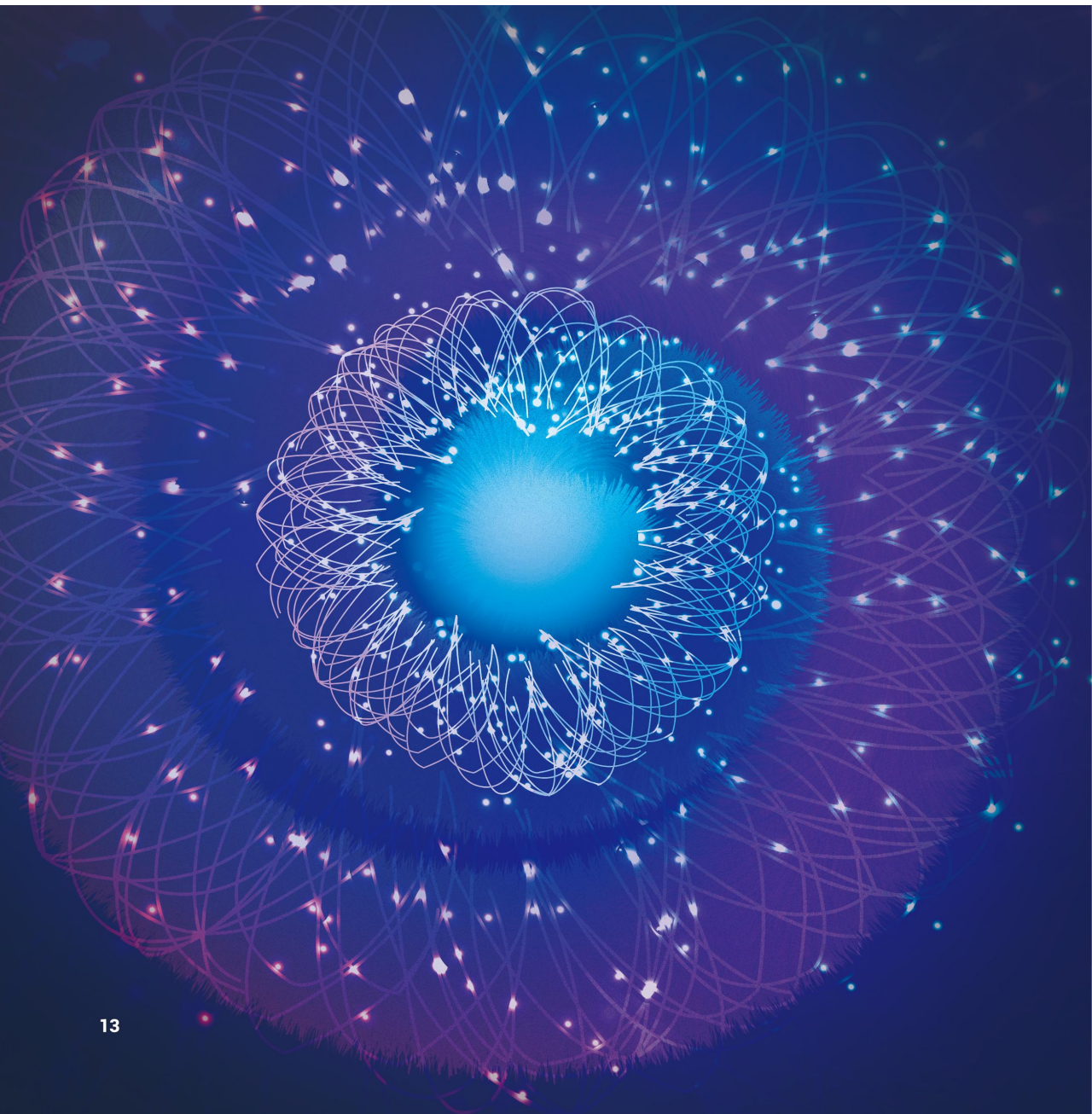


▶▶ 智能家居 | Home Decoration

窗帘、地毯、墙布、箱包等装饰线、图案。最新的可穿戴居家医疗设备。

The decoration of curtains, carpets, wall coverings, luggage and so on. It also includes the latest wearable home medical equipment.

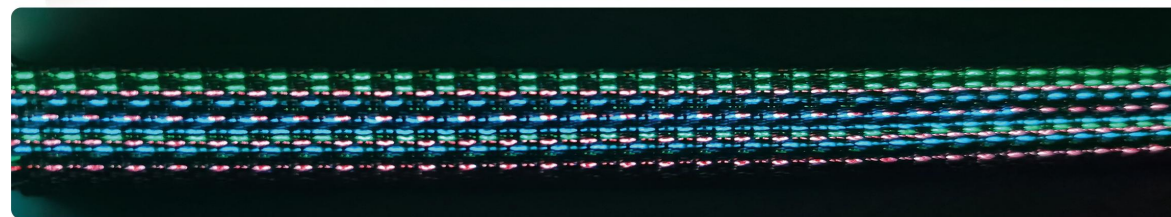
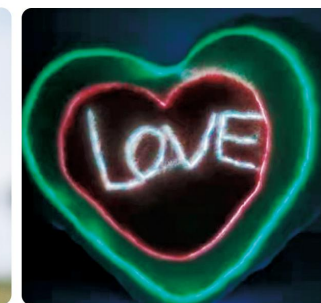




▶▶ 玩具饰品 | Toys & Accessories

高端玩具、动漫玩具周边、工艺美术品、毛绒玩具、宠物饰品等。比如芭比娃娃、迪斯尼饰品等。

High end toys, arts and crafts, pet's accessories, animation toy peripherals such as Barbie dolls, Disney accessories, etc.



创新发展 Innovative Development

通过产品创新升级，开发基于发光纤维材料的柔性显示织物和功能集成系统，如具有发电、储能、变化或显示等多种功能的智能织物和服装，有效满足便携式人机交互系统、柔性健康监测终端、智能装备等新兴重要领域的应用要求，推动传统纺织制造业和物联网、人机交互、大数据、人工智能等新兴领域的快速融和发展。

Through product innovation and upgrading, we will promote rapid integration and development of traditional textile manufacturing and Internet of Things, human-computer interaction, big data and artificial intelligence, to contribute to the industrial revolution of the world.

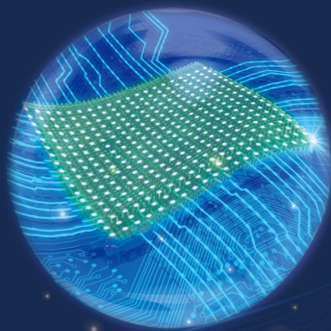
物联网
Internet of Things



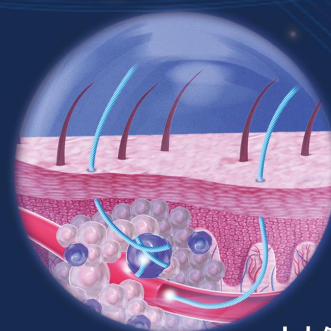
人工智能
Artificial Intelligence



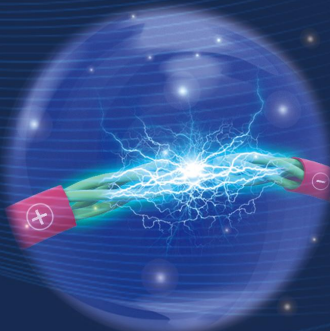
信息科技
Information Technology



大健康
Public Health



能源供给
Energy Source



航空航天
Space Exploration

